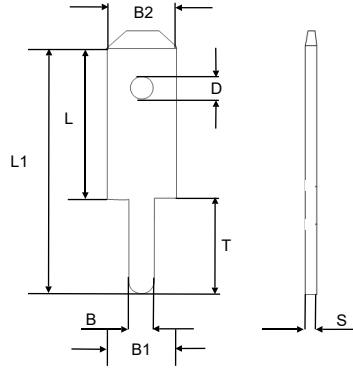


PCB TAB TERMINALS

2.8mm PCB Tab Terminals

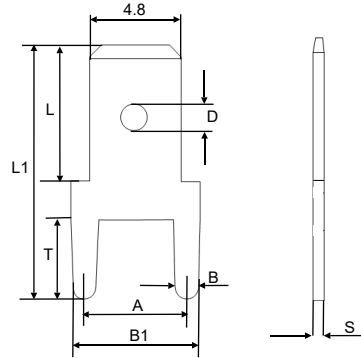


DIN 46342, part 1

Model No.	Material	Dimensions (mm)								
		T	L	L1	B1	B2	D	B	S	Ø Thru hole
TAB 378005.68(MS TIN)	Brass Tin Plated	3.8	6.7	10.5	2.8	2.8	1.4	1	0.5	0.9
TAB 378008.68(MS TIN)	Brass Tin Plated	3.8	6.7	10.5	2.8	2.8	1.4	1	0.8	1

Note: 1) Delivery lead times may vary depending on the product. Contact JST for details, these products are ONLY available from the following JST affiliates; J.S.T. (U.K.) Ltd, J.S.T. Belgium N.V., J.S.T. India Liaison Office, and JST-SouthAfrica.com.
 2) In line with a policy of continual product development, JST reserves the right to change the specifications of the goods described in the catalogue At any time and without prior notice.

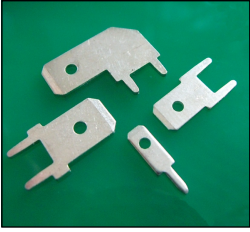
4.8mm PCB Tab Terminals



DIN 46342, part 1

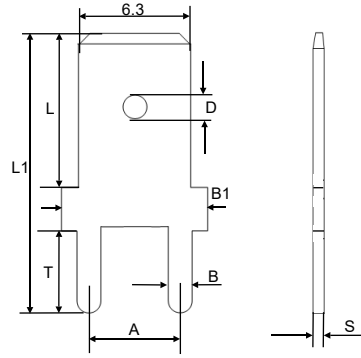
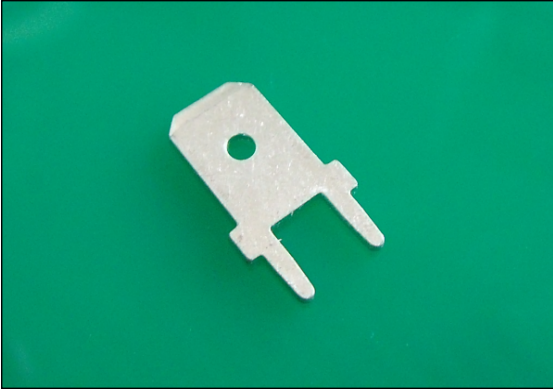
Model No.	Material	Dimensions (mm)								
		T	L	L1	B1	A	D	B	S	Ø Thru hole
TAB 382505.68(MS TIN)	Brass Tin Plated	4	6.4	12.6	6.3	5	1.4	1.3	0.5	1.3
TAB 382508.68(MS TIN)	Brass Tin Plated	4	6.4	12.6	6.3	5	1.4	1.3	0.8	1.3

Note: 1) Delivery lead times may vary depending on the product. Contact JST for details, these products are ONLY available from the following JST affiliates; J.S.T. (U.K.) Ltd, J.S.T. Belgium N.V., J.S.T. India Liaison Office, and JST-SouthAfrica.com.
 2) In line with a policy of continual product development, JST reserves the right to change the specifications of the goods described in the catalogue At any time and without prior notice.



PCB TAB TERMINALS

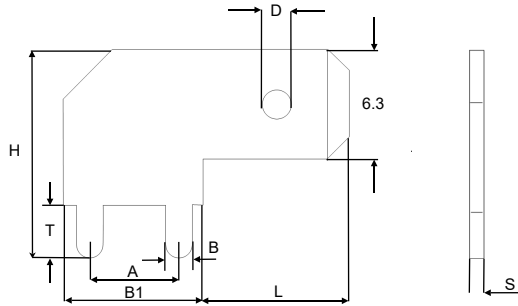
6.3mm PCB Tab Terminals



DIN 46342, part 1

Model No.	Material	Dimensions (mm)								
		T	L	L1	B1	A	D	B	S	Ø Thru hole
TAB 3866A.68(MS TIN)	Brass Tin Plated	3.6	8	14.2	8	5	1.65	1.3	0.8	1.3

Note: 1) Delivery lead times may vary depending on the product. Contact JST for details, these products are ONLY available from the following JST affiliates; J.S.T. (U.K.) Ltd, J.S.T. Belgium N.V., J.S.T. India Liaison Office, and JST-SouthAfrica.com.
 2) In line with a policy of continual product development, JST reserves the right to change the specifications of the goods described in the catalogue At any time and without prior notice.



DIN 46342, part 1

Model No.	Material	Dimensions (mm)								
		T	H	A	B1	L	D	B	S	Ø Thru hole
TAB 3867B.68(MS TIN)	Brass Tin Plated	3	12	5	8	8.2	1.65	1.3	0.8	1.3

Note: 1) Delivery lead times may vary depending on the product. Contact JST for details, these products are ONLY available from the following JST affiliates; J.S.T. (U.K.) Ltd, J.S.T. Belgium N.V., J.S.T. India Liaison Office, and JST-SouthAfrica.com.
 2) In line with a policy of continual product development, JST reserves the right to change the specifications of the goods described in the catalogue At any time and without prior notice.